

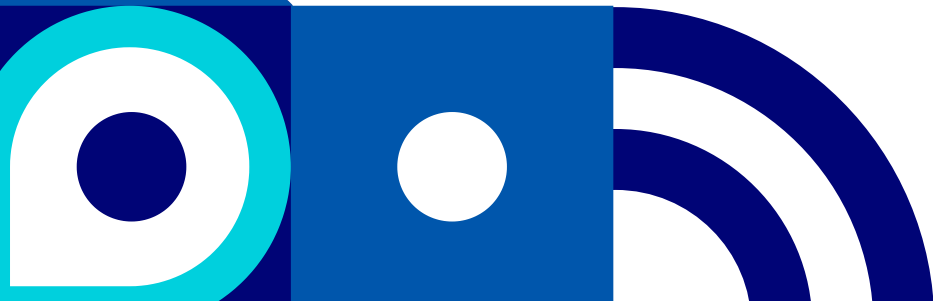
SEPAG

January 27, 2026

All About Occupational Therapy (OT)

What Is Occupational Therapy (OT)?

- Occupational Therapy helps children develop skills needed for everyday activities
- OT supports:
 - Learning
 - Play
 - Self-care
 - Emotional and sensory regulation
- The goal is to help children be more independent, confident, and successful



What Is School-Based OT?

- School-based OT helps students participate and succeed in school
- Services focus on skills that affect learning, such as:
 - Handwriting
 - Attention and focus
 - Organization
 - Classroom routines
- OT services are provided through a child's IEP



How School-Based OT Is Delivered

- Therapy may take place:
 - In the classroom
 - In small groups
 - Through consultation with teachers
- Focus is on:
 - Strategies and accommodations
 - Supporting the child during the school day
- Services are limited to skills that impact **educational performance**


The slide features decorative geometric patterns in dark blue and teal at the corners. These patterns include circles, triangles, and floral-like motifs. The main title is centered in a large, bold, dark blue font.

School-Based OT vs. Clinic-Based OT

- School-Based OT
 - Supports learning in the classroom
 - Focuses on school routines and academic access
- Clinic-Based OT
 - Supports the child across home and community
 - Addresses daily life skills and sensory regulation
 - Often more individualized and intensive



Why a Child May Need Both

- School-based OT helps a child function at school
 - Clinic-based OT can address sensory needs and daily life skills beyond school
 - When both are used, they work together to support the whole child across environments
- 

All About Speech

What Are Speech & Language Services??

- Speech & language services help children communicate and understand others
- These services support:
 - Talking and listening
 - Understanding language
 - Expressing thoughts and needs
 - Social communication
- The goal is to help children communicate successfully in everyday situations


What Is School-Based Speech Therapy?

- School-based speech therapy helps students communicate effectively at school
- Services focus on skills that affect learning, such as:
 - Understanding classroom directions
 - Expressing ideas and answering questions
 - Participating in discussions
 - Social communication with peers and adults
- Services are provided through a child's IEP



How School-Based Speech Is Delivered

- Therapy may be provided:
 - In the classroom
 - In small groups
 - Individually, when appropriate
- Focus is on:
 - Supporting communication during the school day
 - Using strategies that help students access learning
- Services are limited to skills that impact educational performance



School-Based OT vs. Clinic-Based Speech Services

School-Based Speech


- Focuses on communication needed for learning and school participation
- Targets academic and social communication skills in the classroom

Clinic-Based Speech

- Focuses on overall communication across home and community
- May address:
 - Speech sound development
 - Feeding and oral-motor skills
 - More intensive or individualized therapy



Why a Child May Need Both

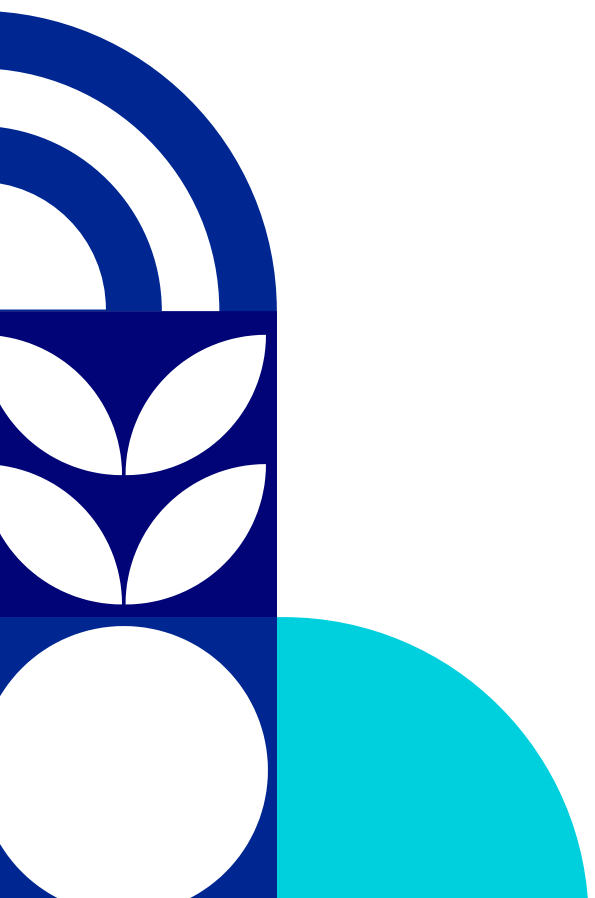

- School-based speech therapy supports success in the classroom
 - Clinic-based speech therapy can address broader or more intensive needs
 - When both are in place, skills can be practiced and generalized across settings
- 



Flexible Service Delivery Model

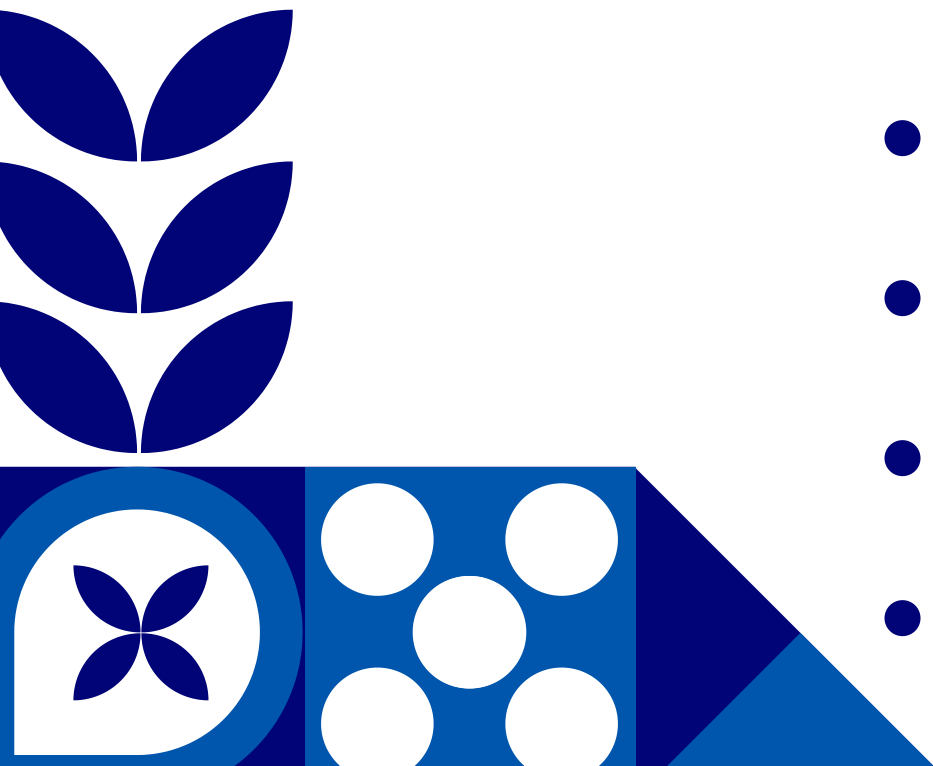
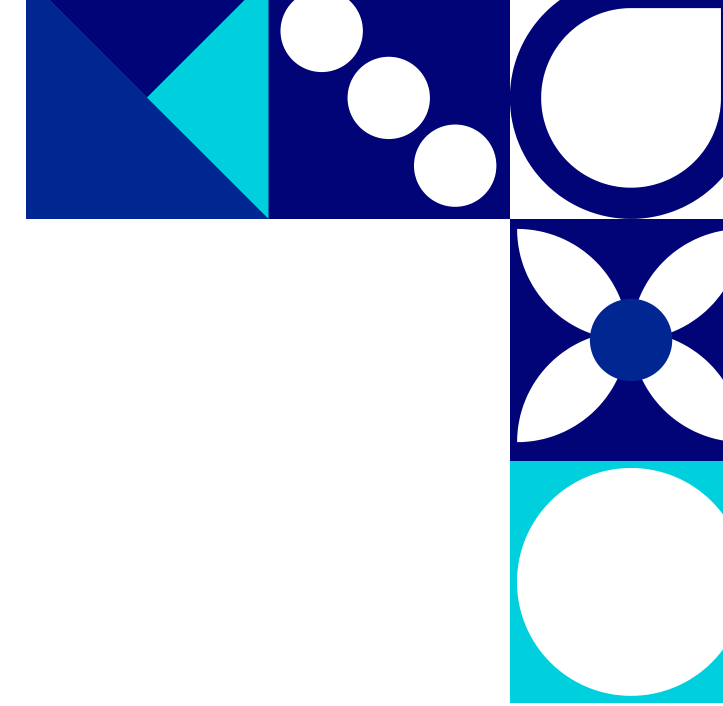



What is a Flexible Service Delivery Model

- Provides both traditional and indirect/consultative services
 - 3 weeks direct= SLP/OT provides traditional direct intervention services
 - 1 week indirect= SLP/OT provides indirect/consultative services
- 
- 

Indirect/consultative Week

- Provide direct services
- Push-in to classrooms
- Observe students
- Evaluate new & current students
- Consult/collaborate
- Attend meetings
- Program AAC devices
- Participate/facilitate PD
- Align IEP goals
- Design MTSS activities
- Develop therapy materials





School-Based OT vs. Clinic-Based Speech Services

School-Based Speech

- Focuses on communication needed for learning and school participation
- Targets academic and social communication skills in the classroom

Clinic-Based Speech

- Focuses on overall communication across home and community
- May address:
 - Speech sound development
 - Feeding and oral-motor skills
 - More intensive or individualized therapy

ASHA , AOTA, & APTA Recommend A WORKLOAD Approach

Workload Approach

- Educational model
- Refers to all of the activities therapists engage in that support students

VS

Caseload Approach

- Medical model
- Refers to the number of students treated by a therapist



Indicator 8

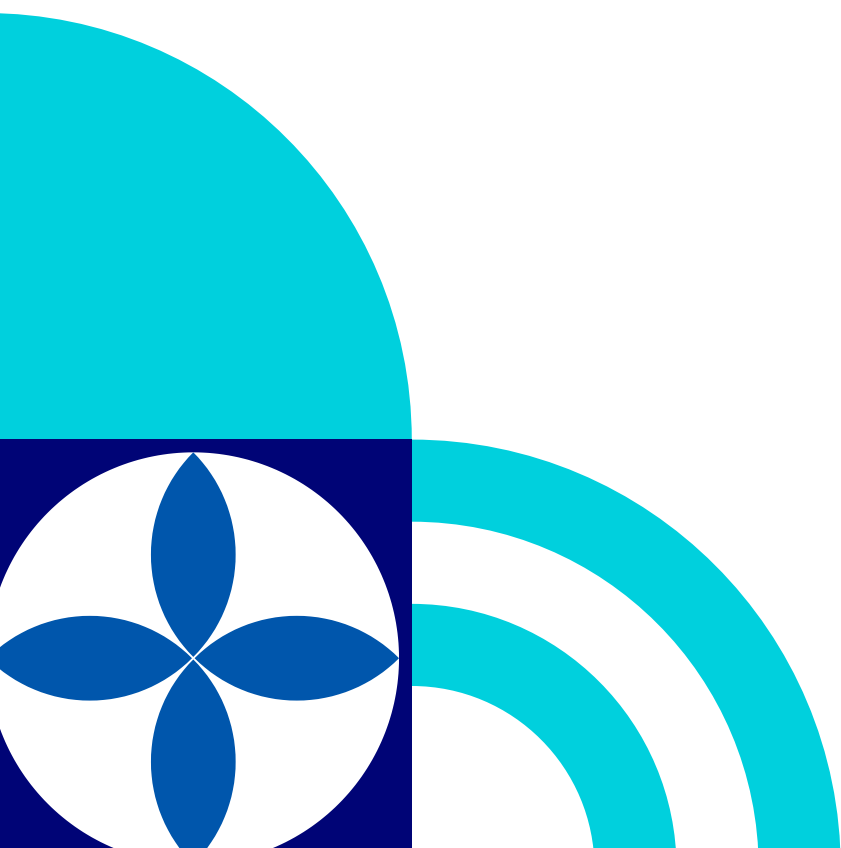
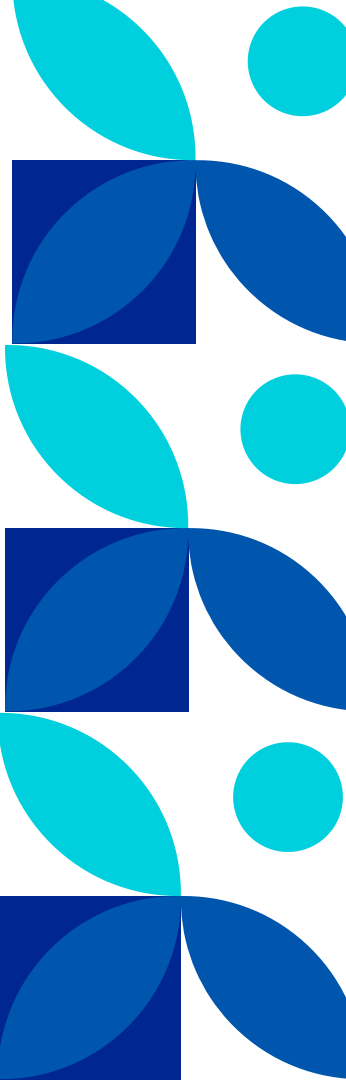


Indicator 8 – Parent Involvement

- IDEA State Performance Plan Indicator
- Applies to preschool and school-age students
- Focuses on family engagement and satisfaction
- Required for all New Jersey LEAs

Focus Question

Are parents and families engaged and satisfied with the special education supports and services provided to their children?



Who Participates

- Parents of students with disabilities
- LEAs participate as part of a statewide rotating cohort
- Each district participates approximately once every six years
- Survey available in multiple languages

Survey Overview

- Responses are:
 - Anonymous & Confidential
- No identifying student or parent information included
- Results inform state and local improvement efforts
- Administered by NJ Department of Education
- Conducted in partnership with:
 - Rutgers University – Bloustein Center for Survey Research
 - Uses the NCSEAM Scale (National Center for Special Education Accountability Monitoring)

Sample

ENGLISH VERSION

FOR INFORMATIONAL PURPOSES ONLY

New Jersey Department of Education
2024-2025 Parent Survey - Special Education

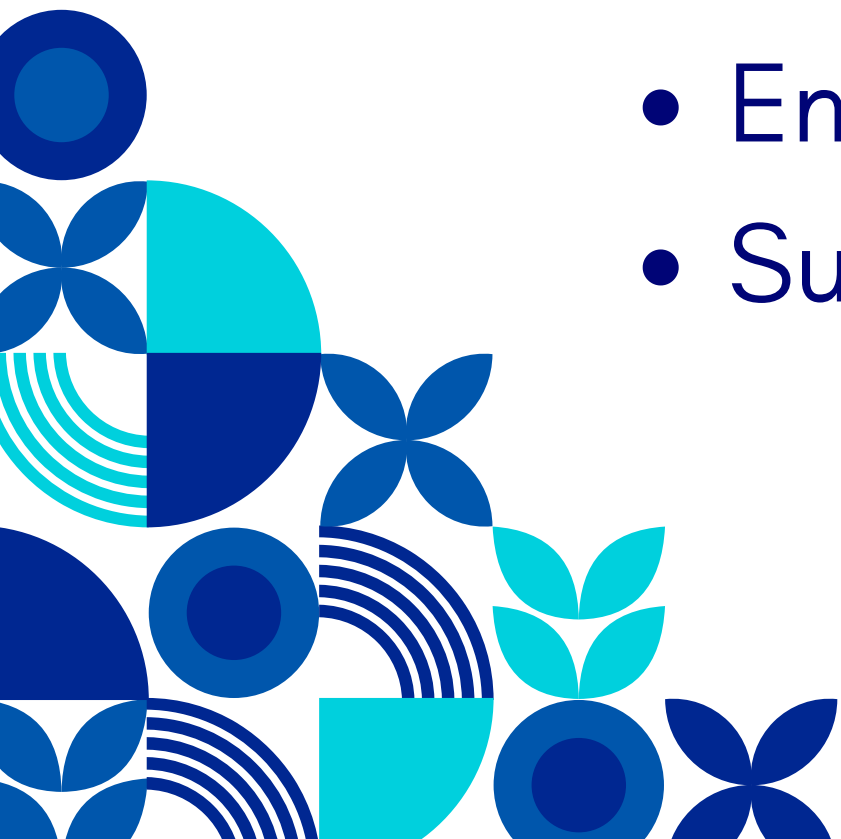
*This is a survey for parents of school-age students receiving special education services (kindergarten through high school). Your responses will help guide efforts to improve services and results for children and families. For each statement below, please select one of the following response choices: very strongly disagree, strongly disagree, disagree, agree, strongly agree, very strongly agree. In responding to each statement, think about your experience and your child's experience with special education **during the 2024-2025 school year**. If an item does not apply, please mark the box in the last column, "Does Not Apply".*

[illegible]



Why This Matters


- Provides direct feedback from families
- Helps districts:
- Improve communication
- Strengthen trust and collaboration
- Enhance special education services
- Supports data-driven decision making



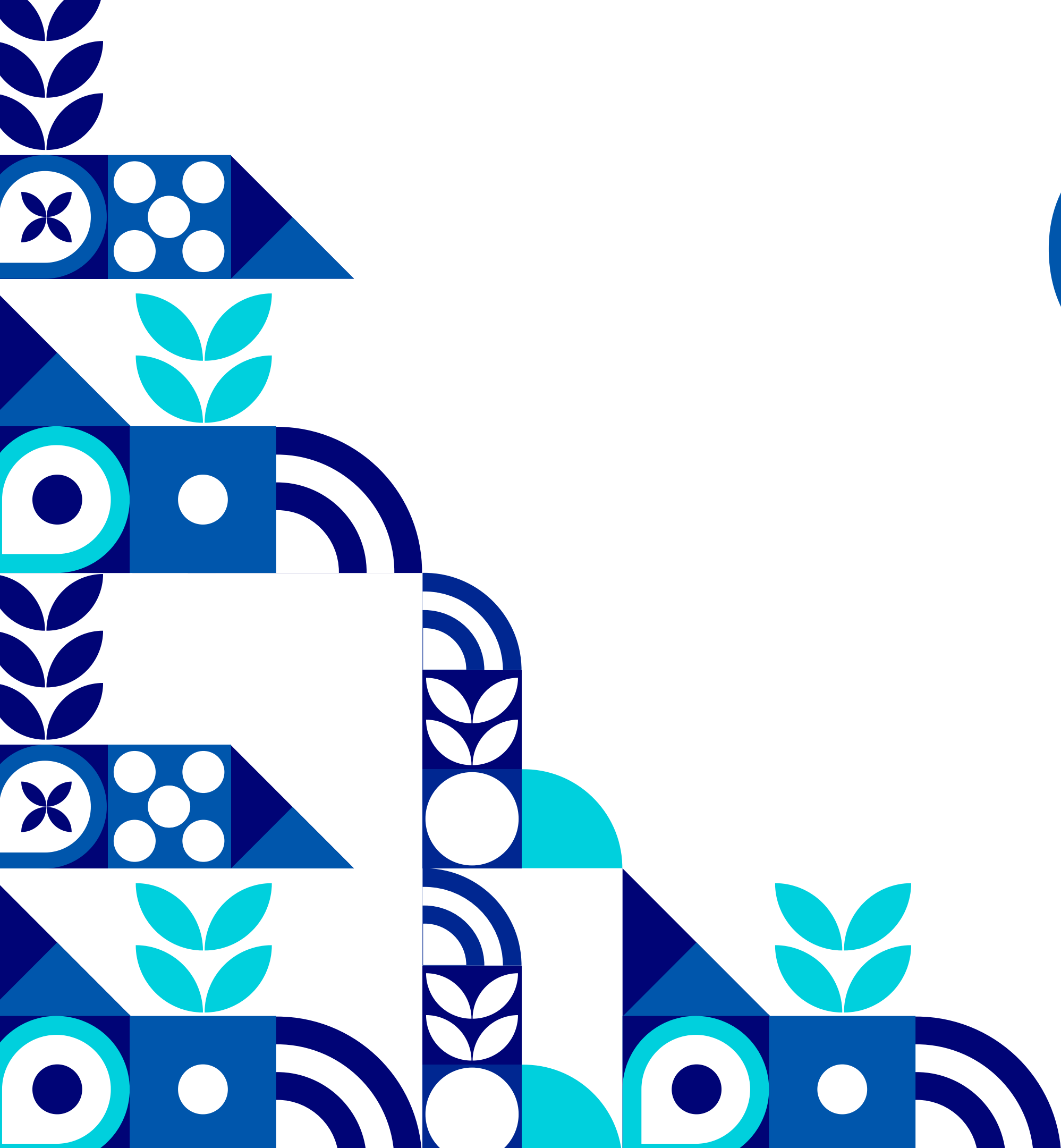


Timeline

In **May** the survey is made available to participating parents both on the web through a link sent in an email, and through paper forms sent in the mail.



A pre-paid, self-addressed return envelope is enclosed with the mailed paper survey, and is addressed to a private agency that will scan and summarize the information on each survey.



Q & A